



中山联昌电器有限公司
Zhongshan Lianchang Co., Ltd.

中山联昌电器有限公司

广东省中山市五桂山长逸路23号长命水工业区B区厂房 528458
Factory House, Zone B, Changmingshui Industrial Zone, No.23,
Changyi Road, Wuguishan, Zhongshan City, Guangdong, China
(Postcode: 528458)



(亚马逊)
Amazon

United International Co., Ltd.

12F, No. 520, Section 4, Ren-Ai Road, Taipei, Taiwan
官网: Website <http://united-airmaster.com>
阿里巴巴: Alibaba <http://airmaster.en.alibaba.com>



(阿里巴巴)
Alibaba



Air master

中山联昌电器产品型录

UNITED INTERNATIONAL PRODUCTS

2001年 于中山市设立中山联昌电器 2021年 中山联昌电器展开新的开始

在中山市五桂山建立全新的生产基地, 统合上游物料、成品组装、仓储出货, 优化生产管理动线以提升服务效率, 打造更完整的中山联昌工业园区。

2021.Oct: A New Leap in Business:

- Zhongshan Lianchang starts a new page in business. We build and move to a new Manufacturing Site!
- Zhongshan Lianchang Industrial Park combines component sites, assembly factory and ware houses together. The compact supply network could strengthens horizontal and vertical communication, enlarging the producing efficiency.
- We've set some great milestones in the past 20 years, and we look forward to achieve a better success in the future.



中山联昌, 专业家电代工制造商

移动空调x除湿机x空气清净机x净水机, 移动式生活家电的研发领先者
我们期望, 联同所有合作伙伴繁荣昌盛
创新、质量、稳定, 二十年的坚持, 始终如一

+专业研发代工

中山联昌电器是来自台湾的专业研发团队, 从1995年开始, 在广东OEM/ODM专业代工市场稳健扎根。中山联昌自诩为空气大师[Air Master], 解决生活中的空气问题: 温度[冷/暖 移动空调]、湿度[除湿机/加湿机]、洁净度[空气清净机]以及清新度[净化芳香机]。

+未来概念创新

活化思考才能持续推出成功产品。质感复合性产品是我们这个阶段的发想方向, 一机满足多样潜在需求; 极简化的选择与操作, 让智能生活再进步, 升级为单纯生活。

+永续经营观

联昌追求空气与水资源的处理、再利用; 产品设计的方针是减少破坏[空间与环境]、增加共享性[多用途]、改善效率[节能再利用], 我们期许跟社会、环境永续发展与经营。

United International Co., Ltd. x Zhongshan LianChang Co., Ltd.

- Experienced Manufacturer in Portable Home Appliance
- Product Line: Portable Air Conditioner, Dehumidifier, Air Purifier
- Zhongshan LianChang, one of the professional Taiwan ODM/OEM manufacturers in China. Our experienced R&D team from Japan and Taiwan home appliance industry build us an "AirMaster", specialize in Portable Air Conditioners, Dehumidifiers and Air Purifiers. We are keen to create SMART compound products satisfying users' multi-needs. We want to follow users' lifestyle, simplifying complex operating procedures in life.
- Zhongshan LianChang believes in the balance and fairness of creatures on earth. Thus, we utilize the reuse and recycle of Air and Water resource in pursuit of the sustainable developments in business and environment.

代工贴牌/内销合作/跨境电商(阿里巴巴/亚马逊) OEM & ODM / Cross-Border Ecommerce (ALIBABA / AMAZON)

+为世界代工-[客制化能力 深广的知识]

中山联昌向每位客户负责,对每台产品用心,为了了解不同国家产品需求,我们钻研各国的环境、法规与文化。透过多年的努力,我们成功将产品推广至全世界各个角落。
我们承诺,中山联昌电器有专业能力客制化(OEM/ODM)提供最合适需求的产品

ODM/OEM Up-to-Date products

To align with customers' growing needs, we dedicate ourselves to investigating environment, product legislation and culture of various countries. Now we successfully expand our business globally. We commit to providing right products to the right place.

+专利技术与创新概念-[科技应用 活化新品]

联昌电器的核心竞争力在于研发与创新,联昌拥有30种以上专利:产品发明、机构重组、功能创新及外观造型,保障技术领先;我们也重视科技应用,获当地政府认可为高新技术企业。
新品的推出是中山联昌运转的活力,融合各文化美学设计的多变外观,团队合作发想出的结构与概念,确保产品线持续更新与扩大。

Dynamic Innovation Capability

The core competitive advantage of Zhongshan LianChang is the innovating capability. Our R&D department developed reliable products each year, therefore, we've owned over 30 patents in China ranging from invention, utility and design.

+多国产品认证-[质量稳定 安全合格]

中山联昌通过多项测试与检验,取得各国产品安规证书,与能效、环保认证,适用国家涵盖美、欧、亚、澳、北非、中东等地。
联昌多款合格认证产品,省去您冗长检验、登录时间与成本,帮助快速进、出口;我们亦提供专业知识辅助,协助新认证申请与取得

Multinational Certified & Approved

Certified by over 50 countries, we promise to provide safe and approved products without lengthy applying and inspecting process.

Certificate:

CB/ CE/ GS/ PCT/ cETLus/ CCC/ BSMI/ SASO-ICCP ; Energy Star/ ROHS/ WEEE

产品组合 Product Mix



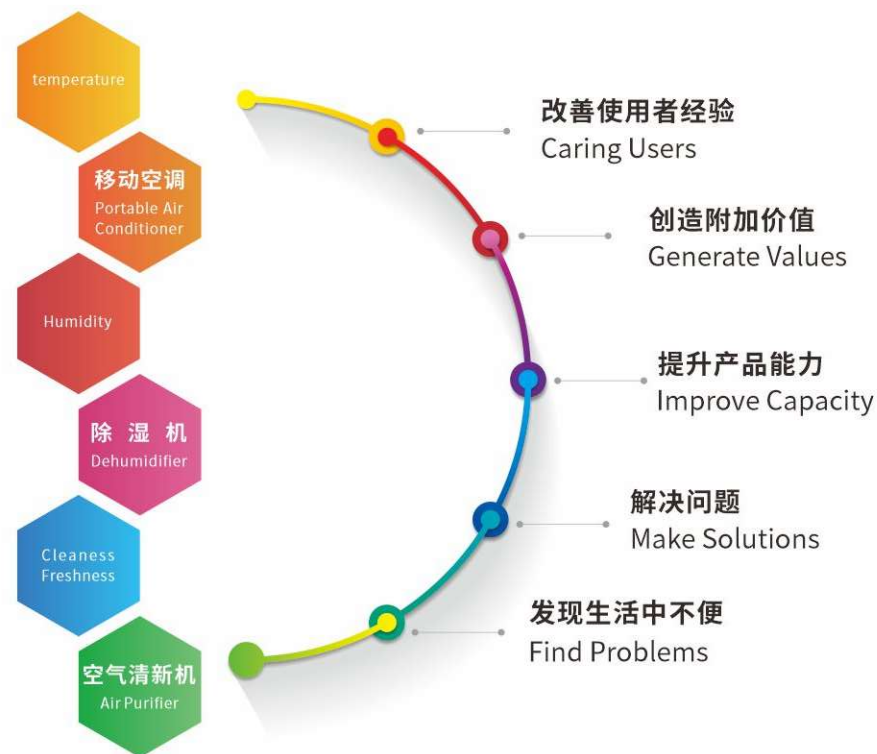
产品研发理念 Problem We Solve & Product We Make

中山联昌产品研发的核心理念从各个层面发想，多元的切入点，才能不断设计出原创且符合用户需求的产品：

解决问题→产品价值提升→用户体验与生活

Our product developing concept and purpose based on various perspectives, to ensure our products continuously meet users' need:

From Problem → Product Value → User Experience



除湿机

- **Dehumidifier:**
Reduce the humidity and Dry the moist stuffs



产品用途 - 除湿机(除湿)

HOW & WHY TO USE DEHUMIDIFIER



强效湿度控制

弹性湿度控制30%, 40%...90%, 可配合天气跟空间调整! 还有不同模式: 干衣、连续除湿CO、舒爽AU、睡眠SLEEP、清净CL, 除了使室内跟人体都干爽、舒适, 还能抑止细菌、霉菌滋生, 健康更升级。

Efficiently Remove the Moisture

Setting the desired humidity flexibly from 30%, 40%... to 90% in different weather. Also provide various smart modes: Continuous Dehumidification[CO], Comfort Mode[AU], Sleep Mode[SLEEP] and Purification[CL]. Waive the damp, the mildew, the bacteria and the odor. Make users and the ambient in comfortable and healthy conditions.

过高湿度的影响

太过潮湿易导致人体呼吸道跟皮肤过敏, 空气中也容易孳生细菌、霉菌, 造成食物腐败、衣物器具发霉。为了使用者的健康与生活的舒适, 建议适当使用除湿功能!

Too Much Humidity Cause Problems

Damp and moisture indoor may generate molds and mildew, triggering allergic symptoms on skin or respiratory and making the food, furniture and clothes collapse easily. The moisture penetrates into the wall hurts the building as well.

除湿机作用与效果

Function and effect of dehumidifier



防止食物腐败
Food Spoilage



防止衣服发霉
Mildew Clothes



避免墙壁白华
Damp Wall



除湿机的五种好处

- 使环境干爽、舒适
- 连绵雨季好干衣
- 降低皮肤、鼻子与呼吸系统过敏不适
- 减少细菌、霉菌滋生机会
- 避免物品发霉、腐败异味(书、食物、家具)

独家特点

- 温风除湿: 可同时暖被、烘鞋
- 24小时开机/关机定时: 随时放心、弹性使用
- 两用排水: 用水箱储水, 或接水管连续排水
- 透明水箱: 可清楚辨认水箱水位
- 自动除霜与水箱水满警报

5 Reasons to Have Dehumidifiers

- Make ambient dry and comfortable
- Dry clothes in rain season
- Reduce the generates of nose and skin allergens
- Lower the breeding of bacteria and mildew
- Free from odor of mould (books, food, furniture)

Our Unique Features

- Warm air dehumidifier: Dry blanket & warm shoes
- 24 hour ON/ OFF timer: flexible and safe to use
- Tank with Pipe connection: Continuous draining
- Transparent water tank: Easily see the water level
- Self-Defrost and Tank Full Alarm



除湿机新品 PD-01AE

New Releases Dehumidifier | PD-01AE





除湿机 PD-01AE

Compact Dehumidifier | PD-01AE



PD-01AE



PD-01BE



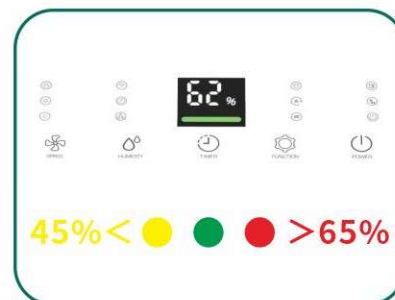
PD-01CE



产品特点介绍

- 日除湿能力:20~40L/Day(30°C RH80%)
- Water Removal: 20~40L/Day (30°C RH80%)
- 双重湿度显示: 双8数值与变色光条
- 2-Way Humidity Display: Color bar and digit display
- 丰富功能模式: 干衣,自动除湿,送风
- Various function modes: Clothe-Drying, Auto DH, Fan
- 触摸控制面板与清晰图标
- Touch pad with 7-segment display
- 弹性可调整湿度: 30, 35 ... 90%
- Flexible Humidity Setting range: 30, 35... 90%
- 24档定时器: 定时开;定时关(独家!)
- 24 hour timer: Auto-on or auto-off with simplest setting.
- 高质量压缩机, 静音运转、低震动、无嗡鸣
- Silent compressor: Stable operation with low vibration
- 适用温度:5~32 °C, 低温自动除霜
- Applicable Environment: 5~32Φ°C . (<5 °C Self-Defrost)
- 安全警示:满水自动停机, 搭配嗡鸣警示
- Safe Alarm: Unit stops operating while the tank is full
- 可加购: 银离子滤网、60cm水管
- Optional: Ag-Ion sterilizing filter, 60cm pipe

产品型号 Model	PD20-01系列 01AE/BE/CE	PD30-01系列 01AE/BE/CE	PD40-01系列 01AE/BE/CE
日除湿量(30°C RH80%) DH Capacity (L/Day)	20	30	40
日除湿量(27°C RH60%) DH Capacity (L/Day)	10	15	20
冷媒种类 Refrigerant Type	R290/ R134a	R290/ R134a	R290/R134a
水箱容量 (L) Water Tank Volume	6.5L	6.5L	6.5L
音量 (dB) Noise	48	50	50
产品尺寸 (mm) Unit Dimensions	W315 x D230 x H590	W315 x D230 x H590	W315 x D230x H590
包装材积 (mm) Packing Dimensions	W375 x D290 x H635	W375 x D290 x H635	W375 x D290 x H635
装柜量 (20'/40'/40'HQ) Container Loading	351/738/984	351/738/984	351/738/984
净重 (kg) Net Weight	15	16	16.5
毛重 (kg) Gross Weight	16.1	17.1	17.6





除湿机新品 PD-02AE

New Releases Dehumidifier | PD-02AE





除湿机 PD-02AE

Compact Dehumidifier | PD-02AE



PD-02AE



PD-02BE



产品特点介绍

- 日除湿量: 10-16L/Day(30°C RH80%)
- Water Removal: 20~40L/Day (30°C RH80%)
- 丰富功能模式: 干衣, 自动除湿
- Various function modes: Cloth-Drying, Auto DH
- 触摸控制面板与清晰图标
- Touch pad with 7-segment display
- 24档定时器: 定时开;定时关(独家!)
- Flexible Humidity Setting range: 30, 35 ... 90%
- 高质量压缩机, 静音运转、低震动无嗡鸣
- Silent compressor: Stable operation with low vibration
- 适用温度: 5~32 °C, 低温自动除霜
- Applicable Environment: 5~32°C . (<5 °C Self-Defrost)
- 2L加大水箱, 亦可收纳电源线
- Safe Alarm: Unit stops operating while the tank is full
- 安全警示: 满水自动停机, 搭配嗡鸣警示
- Optional: Ag-Ion sterilizing filter, 60cm pipe
- 可加购: 银离子滤网、60cm水管

产品型号 Model	PD10-02AE PD10-02BE	PD12-02AE PD12-02BE	PD16-02AE PD16-02BE
日除湿量(30°C RH80%) DH Capacity (L/Day)	10	12	16
日除湿量(27°C RH60%) DH Capacity (L/Day)	5	6	8
冷媒种类 Refrigerant Type	R290/ R134a	R290/ R134a	R290/R134a
水箱容量 (L) Water Tank Volume	2L	2L	2L
音量 (dB) Noise	43	43	43
产品尺寸 (mm) Unit Dimensions	W256 x D205 x H414	W256 x D205 x H414	W256 x D205x H414
包装材积 (mm) Packing Dimensions	W286 x D235 x H446	W286 x D235 x H446	W286 x D235 x H446
装柜量 (20'/40'/40'HQ) Container Loading	980/2065/2478	980/2065/2478	980/2065/2478
净重 (kg) Net Weight	7.5	8.5	9.0
毛重 (kg) Gross Weight	8.0	9.0	9.5



电源
Power



定时
Timer



湿度设定
Humidity +/-



风速
Speed



湿度设定 Humidity Setting



定时器 (开/关) Timer(On/Off)



万向脚轮 Castors



水箱 Water Tank



漩状前出风 Swirl Air Outlet



顶部出风 Air Outlet Grille



除湿机新品 PD-K系列

New Releases Dehumidifier | PD-K series





除湿机 PD-KAE

Compact Dehumidifier | PD-KAE



产品特点介绍

- 除湿量: 10~20L/Day(30°C RH80%)
- 静音安眠除湿(40dB), 运转整晚不失眠
- 迷你轻巧机身, 妇女/长辈好搬运
- 弹性湿度与模式: 30~90%, CO, AU, (CL)
- 连续干衣、除湿, 保持衣物干爽柔软无异味
- 24档定时器: 定时开;定时关(独家!)
- 高质量压缩机, 静音运转、低震动无嗡鸣
- 2.5L加大水箱, 亦可收纳电源线
- 高密度尼龙滤网, 可重复清洗、阻挡空气中灰尘与异物进入机体, 有效净化空气!
- Water Removal: 10~20L/Day (30°C RH80%)
- Quite Sleep Mode for baby and light sleeper
- Adorable baby size with super light weight
- Flexible Humidity Setting and modes: 30~90
- Continuous Clothes Drying: Makes the clothes soft and dry, and keep the closet fresh and odorless
- 24 hour timer: Auto-on or auto-off with simplest setting.
- Silent compressor: Stable operation with low vibration
- 2.5L large water tank prolong the dehumidify duration
- Washable high density filter catches dust and hair in air

产品型号 Model	PD10-KAE	PD12-KAE	PD16-KAE	PD20-KAE
日除湿量(30°C RH80%) DH Capacity (L/Day)	10	12	16	20
日除湿量(27°C RH60%) DH Capacity (L/Day)	5	6	8	10
冷媒种类 Refrigerant Type	R290/R134a	R290/R134a	R290/R134a	R290/R134a
水箱容量 (L) Water Tank Volume	2.5L	2.5L	2.5L	2.5L
音量 (dB) Noise	<43	<43	<43	<43
产品尺寸 (mm) Unit Dimensions	290 x 240 x 414	290 x 240 x 414	290 x 240 x 414	290 x 240 x 414
包装材积 (mm) Packing Dimensions	330 x 284 x 444	330 x 284 x 444	330 x 284 x 444	330 x 284 x 444
装柜量 (20'/40'/40'HQ) Container Loading	705/1460/1752	705/1460/1752	705/1460/1752	705/1460/1752
净重 (kg) Net Weight	7	9	10	11
毛重 (kg) Gross Weight	8	10.5	11.5	12.5



湿度设定 Humidity Setting



定时器(开/关)Timer(On/Off)



手把 Handles



水箱 Water Tank



万向脚轮 Castors



加大出风口 Wide Outlet



PD-KAE

PD-KBE

PD-KCE

PD-KDE



PD - KAE

触摸屏 / Touch pad

- 除湿量Capacity (30°C, 80%)
10,12,16,20 L/Day
- 湿度
Humidity:30%~90%



PD - KCE

触控屏 / Touch Pad

- 除湿量Capacity (30°C, 80%)
10,12,16,20 L/Day
- 湿度
Humidity:30%~90%



PD - KBE

触摸屏 / Touch pad

- 除湿量Capacity (30°C, 80%)
10,12,16,20 L/Day
- 湿度
Humidity:30%~90%



PD - KDE

触控屏 / Touch Pad

- 除湿量Capacity (30°C, 80%)
10,12,16,20 L/Day
- 湿度
Humidity:30%~90%



PD-KEE

PD-KFE

PD-KGE



PD - KEE

触摸屏 / Touch pad

- **除湿量Capacity (30°C, 80%)**
10,12,16,20 L/Day
- **湿度**
Humidity:30%~90%



PD - KFE

触摸屏 / Touch pad

- **除湿量Capacity (30°C, 80%)**
10,12,16,20 L/Day
- **湿度**
Humidity:30%~90%



PD - KGE

触摸屏 / Touch Pad

- **除湿量Capacity (30°C, 80%)**
10,12,16,20 L/Day
- **湿度**
Humidity: 30%~90%





除湿机 PD-JAE

Truly Silent Dehumidifier



产品特点介绍

- 最大日除湿能力: 10, 12L/Day
- 悬挂除湿架: 去除水箱后悬挂使用, 不占地面空间、快速除去上层角落水气
- 4L防滴漏水箱(附水箱盖) & 透明水位窗
- 弹性湿度设定与模式: 50~80%; 自动, 干衣
- 简单风格电子面板与LED双8显示
- 360度环状出风, 高效除湿、干衣
- 24档定时器: 定时开; 定时关(独家!)
- 高质量压缩机, 静音运转、低震动无嗡鸣
- 安全警示: 满水自动停机, 搭配嗡鸣警示
- Water Removal: 10, 12L/Day (30°C RH80%)
- Hanging Rack: Put the upper body on rack. Save the space and efficiently remove roof and wall's moisture.
- 4L water tank with cover and transparent window
- Simple and clean electronic control with LED display
- Humidity Setting: 50~80%, CO, AU, Clothes Drying
- 360° round outlet, efficiently dehumidify the air
- 24 hour timer: Auto-on or off with simplest setting.
- Silent compressor: Stable operation with low vibration
- Safe Alarm: Unit stops operating while the tank is full

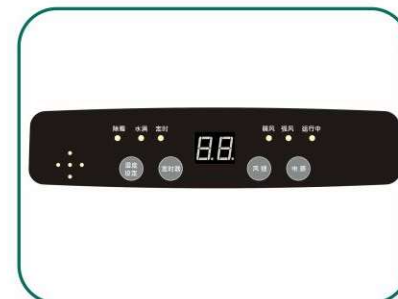
产品型号 Model	PD-JAE/PD-JAM	
日除湿量(30°C RH80%) DH Capacity (L/Day)	10	12
日除湿量(27°C RH60%) DH Capacity (L/Day)	5	6
冷媒种类 Refrigerant Type	R134a	R134a
水箱容量 (L) Water Tank Volume	4L	4L
音量 (dB) Noise	36-45	36-45
产品尺寸 (mm) Unit Dimensions	W314 x D242 x H482	W314 x D242 x H482
包装材积 (mm) Packing Dimensions	W344 x D210 x H443	W344 x D210 x H443
装柜量 (20'/40'/40'HQ) Container Loading	900/1870/2244	900/1870/2244
净重 (kg) Net Weight	9.5	9.5
毛重 (kg) Gross Weight	10.6	10.6

*注: 包装时JAE水箱倒扣, 包装体积会缩小

*Note: The water tank covers on the unit while packing, thus, the packaging size is smaller than unit size



湿度设定 Humidity Setting



控制面板 Control Panel



悬挂安装架 Hanging Rack



水箱 Water Tank

4L



收纳设计 Storage Design



PD-ECE

PD-ECR

PD-EDE

PD-FAM



PD - ECE

电子按键 / Electronic Control

- 除湿量Capacity (30°C, 80%)
10, 12 L/Day

- 湿度
Humidity:50%~80%



PD - EDE

触控屏 / Touch Pad

- 除湿量Capacity (30°C, 80%)
10, 12 L/Day

- 湿度
Humidity: Auto



PD - ECR

机械旋钮 / Mechanic Control

- 除湿量Capacity (30°C, 80%)
10, 12 L/Day

- 湿度
Humidity:Level 1~9, Con.



PD - FAM

一键开机 / On/ Off Button

- 除湿量Capacity (30°C, 80%)
10, 12 L/Day

- 湿度
Humidity: Auto



家用轻巧系列

Household Compact Series

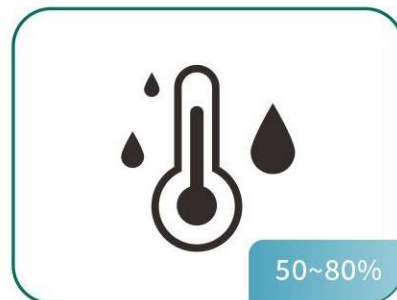




产品特点介绍

- 日除湿能力: 10~20L/ Day (30°C RH80%)
- 电子控制面板与双8显示
- 弹性湿度与模式: 50~80%, 连续, 舒适
- 24档定时器: 定时开; 定时关(独家!)
- 高质量压缩机, 静音运转、低震动无嗡鸣
- 适用温度: 5~32 °C, 低温自动除霜
- 安全警示: 满水自动停机, 搭配嗡鸣警示
- 可加购: 银离子滤网、60cm水管
- Water Removal: 10~20L/Day (30°C RH80%)
- Electronic control panel with 7-segment display
- Humidity Setting: 50~80%, CO, AU
- 24 hour timer: Auto-on or auto-off with simplest setting.
- Silent compressor: Stable operation with low vibration
- Applicable Environment: 5~32Φ°C . (<5 °C Self-Defrost)
- Safe Alarm: Unit stops operating while the tank is full
- Optional: Ag-Ion sterilizing filter, 60cm pipe

产品型号 Model	PD-PAE/PD-PAM1			
日除湿量(30°C RH80%) DH Capacity (L/Day)	10	12	16	20
日除湿量(27°C RH60%) DH Capacity (L/Day)	5	6	8	10
冷媒种类 Refrigerant Type	R134a	R134a	R134a	R134a
水箱容量 (L) Water Tank Volume	4L	4L	4L	4L
音量 (dB) Noise	42	42	42	42
产品尺寸 (mm) Unit Dimensions	300 x 239 x 524	300 x 239 x 524	300 x 239 x 524	300 x 239 x 524
包装材积 (mm) Packing Dimensions	328 x 263 x 545	238 x 263 x 545	328 x 263 x 545	328 x 263 x 545
装柜量 (20'/40'/40'HQ) Container Loading	616/1260/1260	616/1260/1260	616/1260/1260	616/1260/1260
净重 (kg) Net Weight	11.5	11.7	13.3	14.5
毛重 (kg) Gross Weight	12.6	12.8	14.5	15.4



湿度设定 Humidity Setting



万向脚轮 Castors



可清洗滤网 Washable Filter



水箱 Water Tank



电源
Power



定时
Timer



湿度设定
Humidity +/-



风速
Speed



一体式注塑手把, 坚固、高承重
Injection Hidden Handle



PD-DAE



PD-DAR



PD-CAE



PD-CAR



PD-DAE

电子按键 / Electronic Control

• **除湿量Capacity (30°C, 80%)**
10, 12, 16, 20 L/Day

• **湿度**
Humidity: 50%~80%



PD-CAE

电子按键 / Electronic Control

• **除湿量Capacity (30°C, 80%)**
10, 12, 16, 20 L/Day

• **湿度**
Humidity: Auto



PD-DAR

机械旋钮 / Mechanic Control

• **除湿量Capacity (30°C, 80%)**
10, 12, 16, 20 L/Day

• **湿度**
Humidity: Low ~ High



PD-CAR

机械旋钮 / Mechanic Control

• **除湿量Capacity (30°C, 80%)**
10, 12, 16, 20 L/Day

• **湿度**
Humidity: Level 1~9, Con.



PD-SAE



PD-SEE



PD-SCE



PD-SAM



PD-SDE



PD-SFE



PD-SAN



PD-SDM



PD-SAE

电子按键 / Electronic Control

• 除湿量Capacity (30°C, 80%)
10, 12, 16, 20 L/Day

• 湿度
Humidity: 50%~80%



PD-SAM

一键开机 / On/ Off Button

• 除湿量Capacity (30°C, 80%)
10, 12, 16, 20 L/Day

• 湿度
Humidity: Auto



PD-SAR

机械旋钮 / Mechanic Control

• 除湿量Capacity (30°C, 80%)
10, 12, 16, 20 L/Day

• 湿度
Humidity: Level 1~9, Con.



PD-SAN

电子按键 / Electronic Control

• 除湿量Capacity (30°C, 80%)
10, 12, 16, 20 L/Day

• 湿度
Humidity: 50%~80%





除湿机 PD-WAE

High Performance Dehumidifier | PD-WAE



产品特点介绍

- 最大日除湿能力:20, 30, 35L/Day
- 流线质感触摸屏, 高亮度温度和湿度双显示
- 智慧家电: 可WiFi联机和APP控制
- 弹性湿度设定与模式:30~90%; 自动, 干衣
- 连续干衣、除湿, 保持衣物干爽柔软无异味
- 四档定时器(1/2/4/8小时): 自动开和关机
- 高质量压缩机, 静音运转、低震动、无嗡鸣
- 适用温度:5~32 °C, 低温自动除霜
- 安全警示: 满水自动停机, 搭配嗡鸣警示
- 4.8L加大水箱, 亦可收纳电源线

- Water Removal: 20, 30, 35L/Day (30°C RH80%)
- Touch pad with Temperature and Humidity display
- Smart appliance with Wi-Fi and APP control
- Humidity Setting: 30~90%, Auto, Clothes-Drying
- Continuous Clothes Drying: Makes the clothes soft and dry, and keep the closet fresh and odorless
- Auto On/Off timer: Auto-on or auto-off in 1/ 2/ 4/ 8 Hr
- Silent compressor: Stable operation with low vibration
- Applicable Environment: 5~32 °C. (Low Temp. Self-Defrost)
- Safe Alarm: Unit stops operating while the tank is full
- 4.8L large water. Power cord storage available

产品型号 Model	PD-WAE/PD-WBE		
日除湿量(30°C RH80%) DH Capacity (L/Day)	20	30	35
日除湿量(27°C RH60%) DH Capacity (L/Day)	10	15	18
冷媒种类 Refrigerant Type	R290/ R134a	R290/ R410a	R290/R410a
水箱容量 (L) Water Tank Volume	4.8L	4.8L	4.8L
音量 (dB) Noise	51	51	51
产品尺寸 (mm) Unit Dimensions	W408 x D268 x H574	W408 x D268 x H574	W408 x D268x H574
包装材积 (mm) Packing Dimensions	W496 x D356 x H620	W496 x D356 x H620	W496 x D356 x H620
装柜量 (20'/40'/40'HQ) Container Loading	216/459/612	216/459/612	216/459/612
净重 (kg) Net Weight	17	18	18.5
毛重 (kg) Gross Weight	18.3	19.3	20



湿度设定 Humidity Setting



定时器(开/关) Timer(On/Off)



温湿度显示 Temp.& Humidity



水箱 Water Tank



智能联机
Wi-Fi



风速
Speed



定时
Timer



模式
Mode



湿度设定
Humidity +/-



睡眠
Sleep



万向脚轮 Castors



内推手把 Hidden Handles



除湿机 PD-VAE

Ultra Performance Dehumidifier | PD-VAE



产品特点介绍

- 除湿能力: 40~80L/Day (30°C, RH80%)
- 5.6L防滴漏、防溅水箱(包覆式)
- 外挂式HEPA滤网, 可达PM2.5杀菌过滤
- 弹性湿度与模式: 50~80%, 连续, 舒适
- 75度大角度吹拂扇叶
- 电源线收纳固定杆
- 适用温度: 5~32 °C, 低温自动除霜
- 安全警示: 满水自动停机, 搭配嗡鸣警示
- 可加购: HEPA净化滤网、60cm水管
- Water Removal: 40~80L/Day (30°C RH80%)
- 5.6L water tank with full covered
- Attachable HEPA filter at back
- Humidity Setting: 50~80%, CO, AU
- 75° swinging blade
- Power cord rack for storage
- 24 hour timer: Auto-on or auto-off with simplest setting.
- Applicable Environment: 5~32 °C. (<5 °C Self-Defrosting)
- Safe Alarm: Unit stops operating while the tank is full
- Optional: Ag-Ion sterilizing filter, UVC light, 60cm pipel

产品型号 Model	PD40-SSE	PD50-VAE	PD60-VAE	PD80-VAE
日除湿量(30°C RH80%) DH Capacity (L/Day)	40	50	60	80
日除湿量(27°C RH60%) DH Capacity (L/Day)	20	25	30	40
冷媒种类 Refrigerant Type	R290/R410a	R290/R410a	R290/R410a	R290/R410a
音量 (dB) Noise	<65	<65	<65	<65
产品尺寸 (mm) Unit Dimensions	400 x 310 x 540	400 x 310 x 645	400 x 310 x 645	400 x 310 x 645
包装材积 (mm) Packing Dimensions	450 x 370 x 590	488 x 409 x 720	488 x 409 x 720	488 x 409 x 720
装柜量 (20'/40'/40'HQ) Container Loading	237/492/656	192/405/405	192/405/405	192/405/405
净重 (kg) Net Weight	21.4	23.5	24.5	26.5
毛重 (kg) Gross Weight	23.4	25.5	26.5	28.5
认证 Certificate	CE	CE	CE	CE





湿度设定 Humidity Setting



万向脚轮 Castors



电线缠绕架 Power Cord Rack
*选配HEPA滤网 (Optional) HEPA filter



水箱 Water Tank



多角度叶片 Blades and Knob



PD-GAE



PD-HAE



PD - HAE

电子按键 / Electronic Control

- 除湿量Capacity (30°C, 80%)
40,50,60 L/Day
- 湿度
Humidity:30%~90%



PD - LAE/LCE/LEE

电子按键 / Electronic Control

- 除湿量Capacity (30°C, 80%)
30,40,50,60,70 L/Day
- 湿度
Humidity: 30%~90%



PD - GAE

电子按键 / Electronic Control

- 除湿量Capacity (30°C, 80%)
30 L/Day
- 湿度
Humidity:Auto



PD - LAR/LCR/LER

机械旋钮 / Mechanic Control

- 除湿量Capacity (30°C, 80%)
30,40,50,60,70 L/Day
- 湿度
Humidity:30%~90%